

FOR LEASE

Commercial – Office

2301 de Versailles- Suite 105B
Mascouche



SPACE FOR LEASE

GROUND LEVEL

USE : OFFICE OR COMMERCIAL

Suite 105B 2,545 sq.ft.

OCCUPANCY DATE

Immediate

LEASE RATE

16.00 \$ / sq.ft.

OPERATING EXPENSES

6.50 \$ / sq.ft. (including taxes)

UTILITIES

Independent Hydro-Quebec and Gaz Metropolitain meters

LEASING

T : 514-840-9339

BUILDING INFORMATION

CONSTRUCTION YEAR

2012

TOTAL AREA

Building	17,566 sq.ft.
Ground level	12,413 sq.ft.
1st floor	5,153 sq.ft.
Land	53,746 sq.ft.

PARKING

86 outdoor spaces

MAIN INTERSECTION

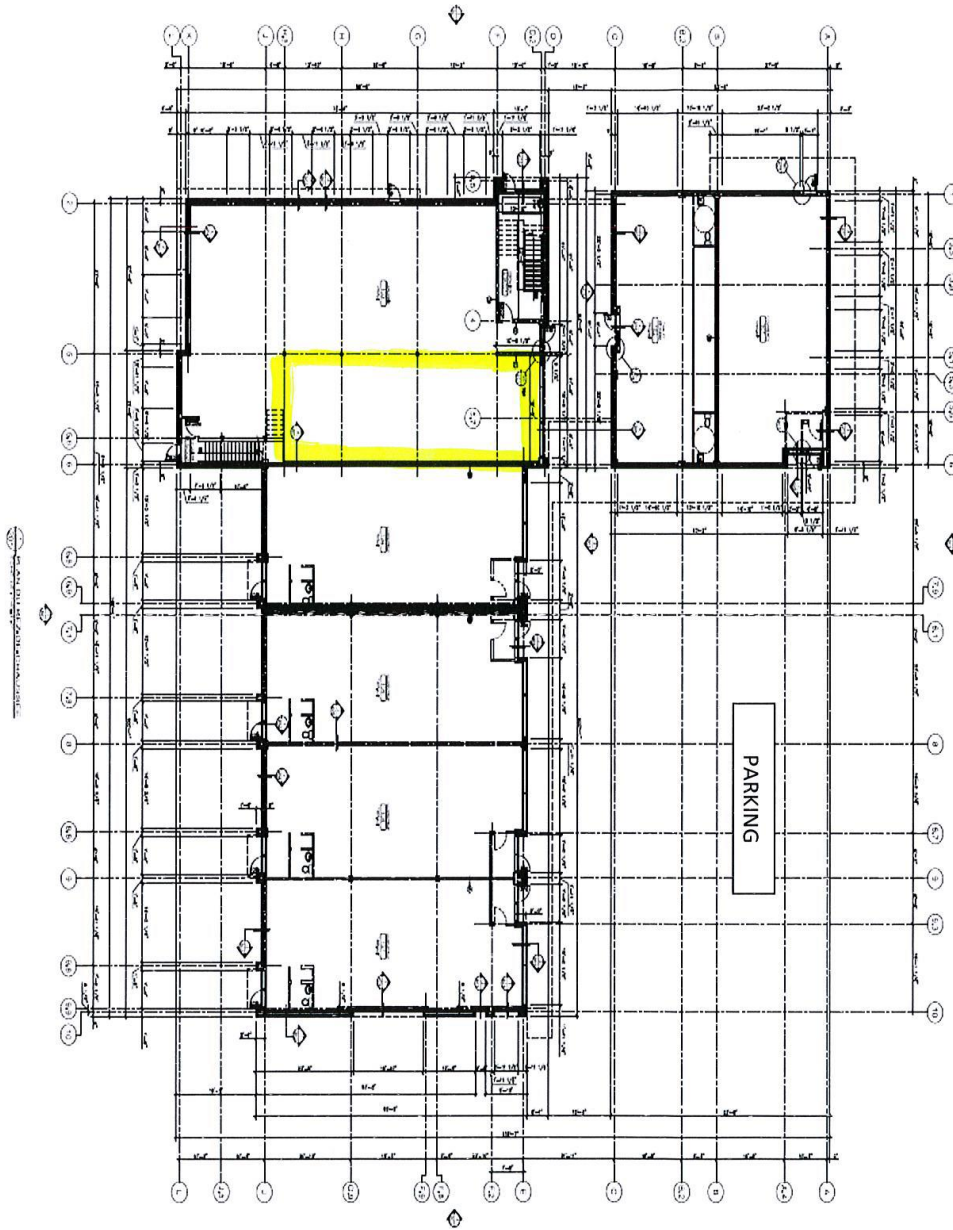
Avenue de Versailles and de l'Esplanade

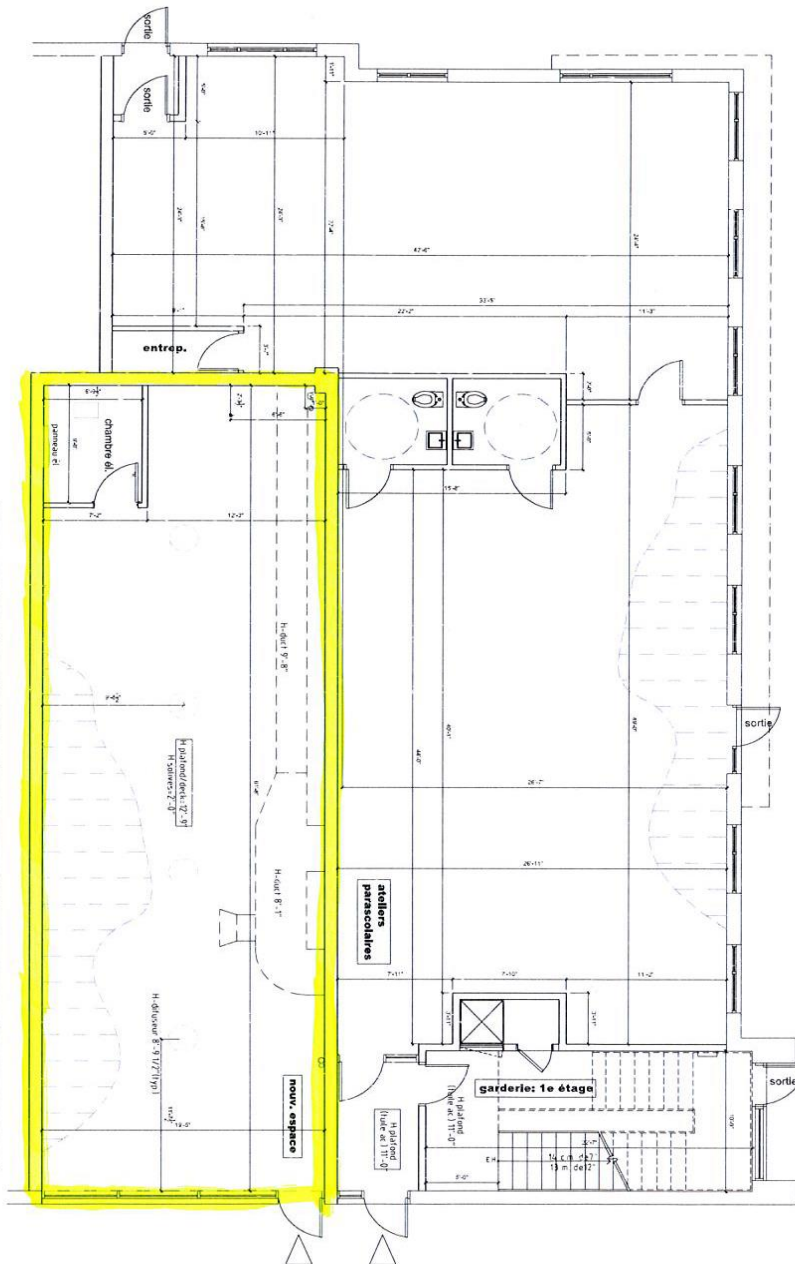
MAIN TENANTS

Boni Soir, Dentiste, Garderie



FPI Nobel





ESPACE	SUPERFICIE BÂTIE	SUPERFICIE BRUTE	VIDES TECHNIQUES VERTICAUX	SUPERFICIE LOCATIVE
Nouvel espace (non-utilisé)	1283,20 pi² 119,271 m²	1208,25 pi² 112,25 m²	68,19 pi² 6,333 m²	1140,06 pi² 105,97 m²
Ateliers paracostales (existants)	2517,45 pi² 233,32 m²	2400,00 pi² 222,96 m²	153,30 pi² 14,224 m²	2246,70 pi² 208,72 m²
Partie garderie R.D.C. (existants)	360,20 pi² 33,46 m²	250,43 pi² 23,26 m²	32,76 pi² 3,04 m²	217,67 pi² 20,22 m²